

\$549,999 - 1202 W Hale St., Boise

MLS® #98952362

\$549,999

4 Bedroom, 2.00 Bathroom, 1,960 sqft

Residential on 0.17 Acres

Dundee, Boise, ID

Charming Boise Home Just Minutes from BSU! Welcome to this beautifully updated 4-bedroom, 2-bathroom home located in one of Boise's most desirable and central neighborhoods. Just minutes from Boise State University, the Greenbelt, and downtown, this property offers the perfect blend of comfort, convenience, and space. Step inside to a warm and inviting main level featuring red oak hardwood floors, a bright open-concept living area, and a modern kitchen complete with granite countertops, a center island, custom cabinetry, and stainless steel appliances. Upstairs, you'll find a private primary suite with a spacious walk-in shower—your own peaceful retreat. The main floor includes a second bedroom, while the fully finished basement offers two additional bedrooms, a utility room, and plenty of storage space—perfect for guests, hobbies, or a growing household. Situated on a large lot with mature trees and room to expand or personalize, this home offers both charm and future potential. BATVA

Built in 1939

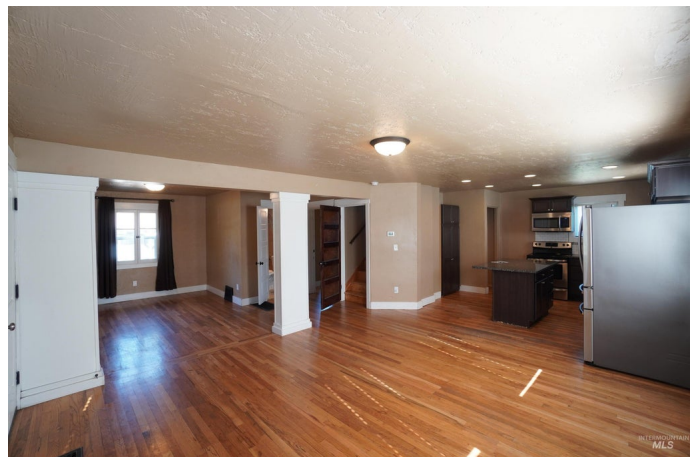
Essential Information

MLS® # 98952362

Price Per SQFT \$281

Bedrooms 4

Bathrooms 2.00



Square Footage	1,960
Acres	0.17
Year Built	1939
Type	Residential
Sub-Type	Single Family Residence
Status	New

Community Information

Address	1202 W Hale St.
Area	Boise SE - 0300
Subdivision	Dundee
City	Boise
County	Ada
State	ID
Zip Code	83706

Amenities

Utilities	Sewer Connected
Parking	RV Access/Parking
RV/Boat Parking	Yes
Golf Course	N

Interior

Interior Features	Bath-Master, Great Room, Walk-In Closet(s), Pantry, Kitchen Island
Appliances	Gas Water Heater, Dishwasher, Disposal, Microwave, Oven/Range Freestanding, Refrigerator
Heating	Forced Air, Natural Gas
Cooling	Central Air
Stories	Two Story w/ Below Grade

Exterior

Lot Description	Standard Lot 6000-9999 SF, R.V. Parking, Corner Lot, Auto Sprinkler System, Full Sprinkler System
Roof	Architectural Style

School Information

District	Boise School District #1
Elementary	Garfield
Middle	East Jr

High Timberline

Additional Information

Date Listed	June 25th, 2025
Zoning	R2D
Property Taxes	\$4,207
Tax Year	2024
Structures	Storage Shed
Office	208 properties Realty Group

Listing Details

Listing Office	208 properties Realty Group
----------------	-----------------------------



IDX information is provided exclusively for consumers' personal, non-commercial use, and may not be used for any purpose other than to identify prospective properties consumers may be interested in purchasing. IMLS does not assume any liability for missing or inaccurate data. Information provided by IMLS is deemed reliable but not guaranteed.

Listing information last updated on June 25th, 2025 at 11:22pm MDT